



MICHELLE HÉBERT

Sketchbook



Behind-the-scenes image by Heather Molina

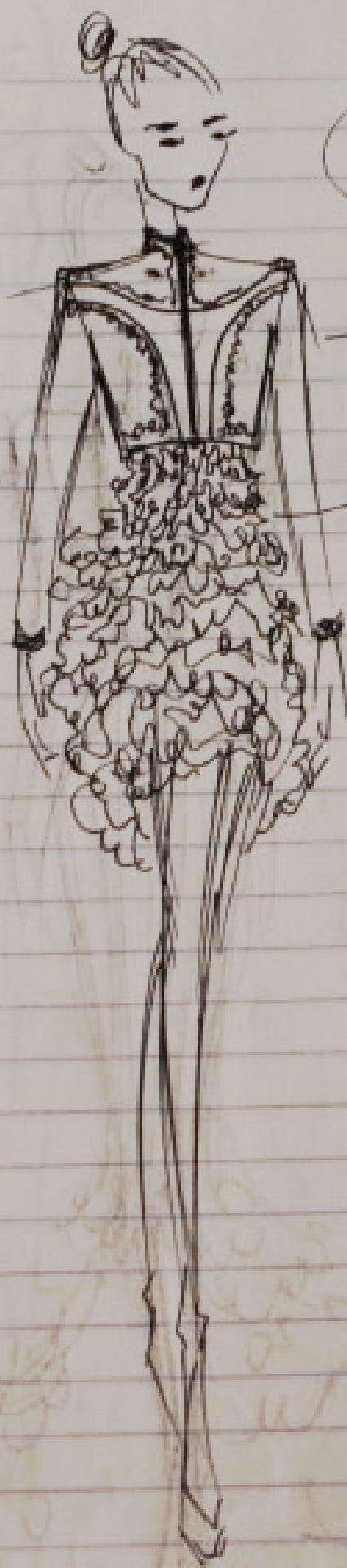
MICHELLE HÉBERT

FASHION DESIGNER & ARTIST

Michelle Hébert is a luxury evening wear brand that intertwines art with fashion to create captivating ethereal designs. The brand's pieces are appreciated widely for their aesthetic appeal, and the designer herself for her passion within her craft. On the surface designs by Michelle Hébert are seen as elegant, flattering, and romantic, but when one delves deeper they notice finer details in the creation of each piece. Each piece being the product of meticulous attention to quality, imaginative concepts, and in simpler terms: a different kind of beauty.

For more information, visit www.michellehebert.com

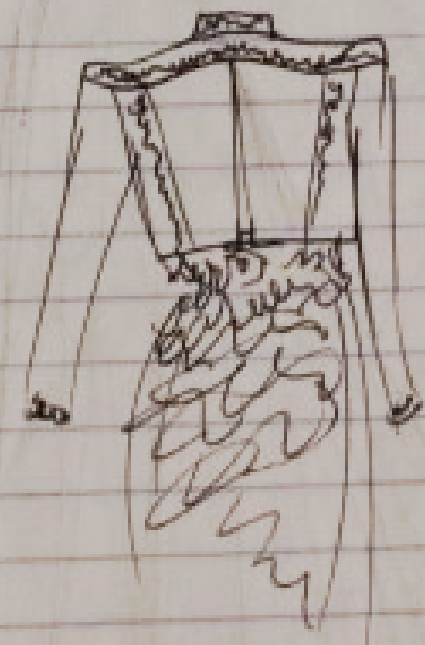
11/19/12



NOT
FOR PANTS

White w/ gold trim

light lavender
to royal blue
dark purple



APRIL 20



lace + sharp details
deep burnt red
large
dark blue
the
lower
dark blue



Above: eveningwear gown designs 2013. Left: RTW design 2012.



Above: Brooke Shaden black feather final gown design 2013

Left: Brooke Shaden black feather first draft gown design 2013

Michelle Hébert Sketchbook layout & design by:

Grey Scarf
DESIGNS

www.greyscarfdesigns.com

Contact Denise@greyscarfdesigns.com

MICHELLE HÉBERT
Sketchbook

www.michellehebert.com

All designs & sketches are the intellectual property of Michelle Hébert. These images cannot be posted and/or distributed without proper credit or upon request.

Recreations of designs based on these sketches must be requested & approved.